

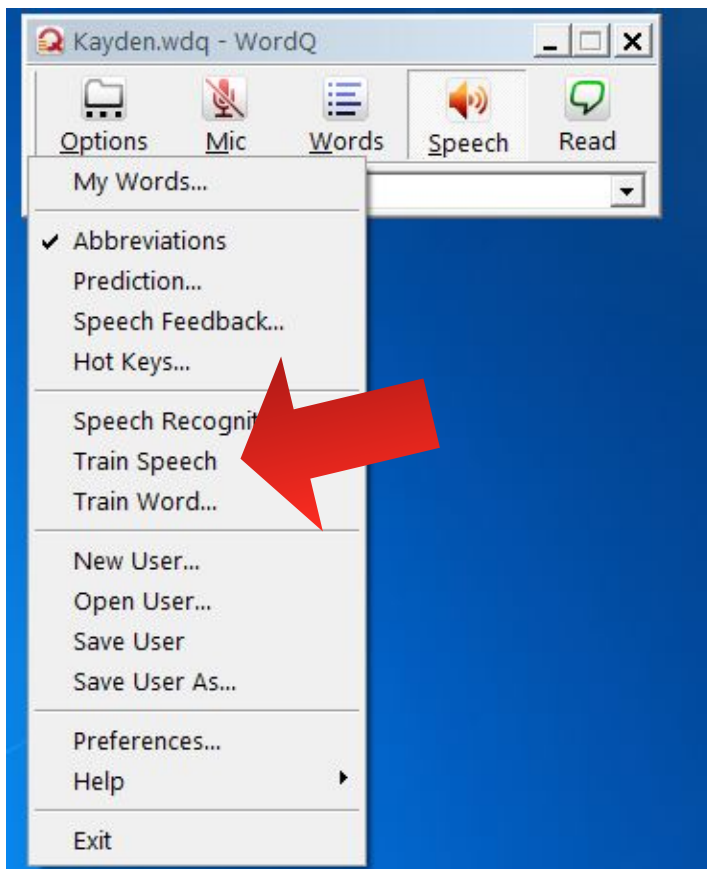
WordQ SpeakQ Train Speech Directions

Students will need to go through some extra steps to find the training files the first time they go to train speech in WordQ.

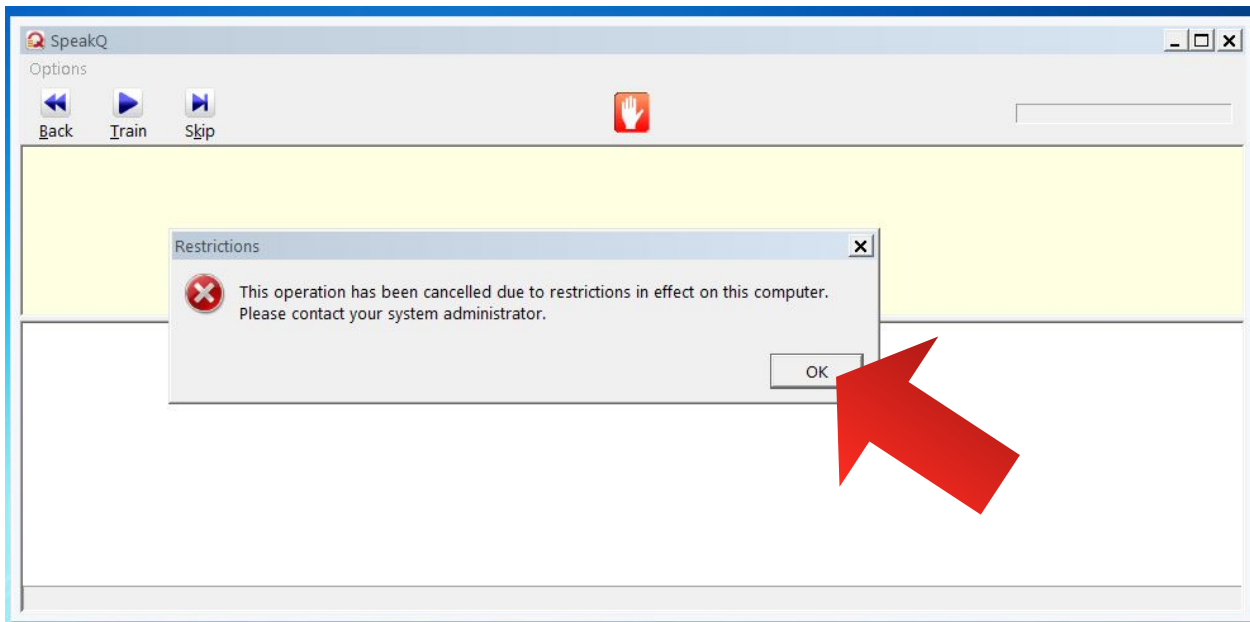
1. Open up WordQ & select options.



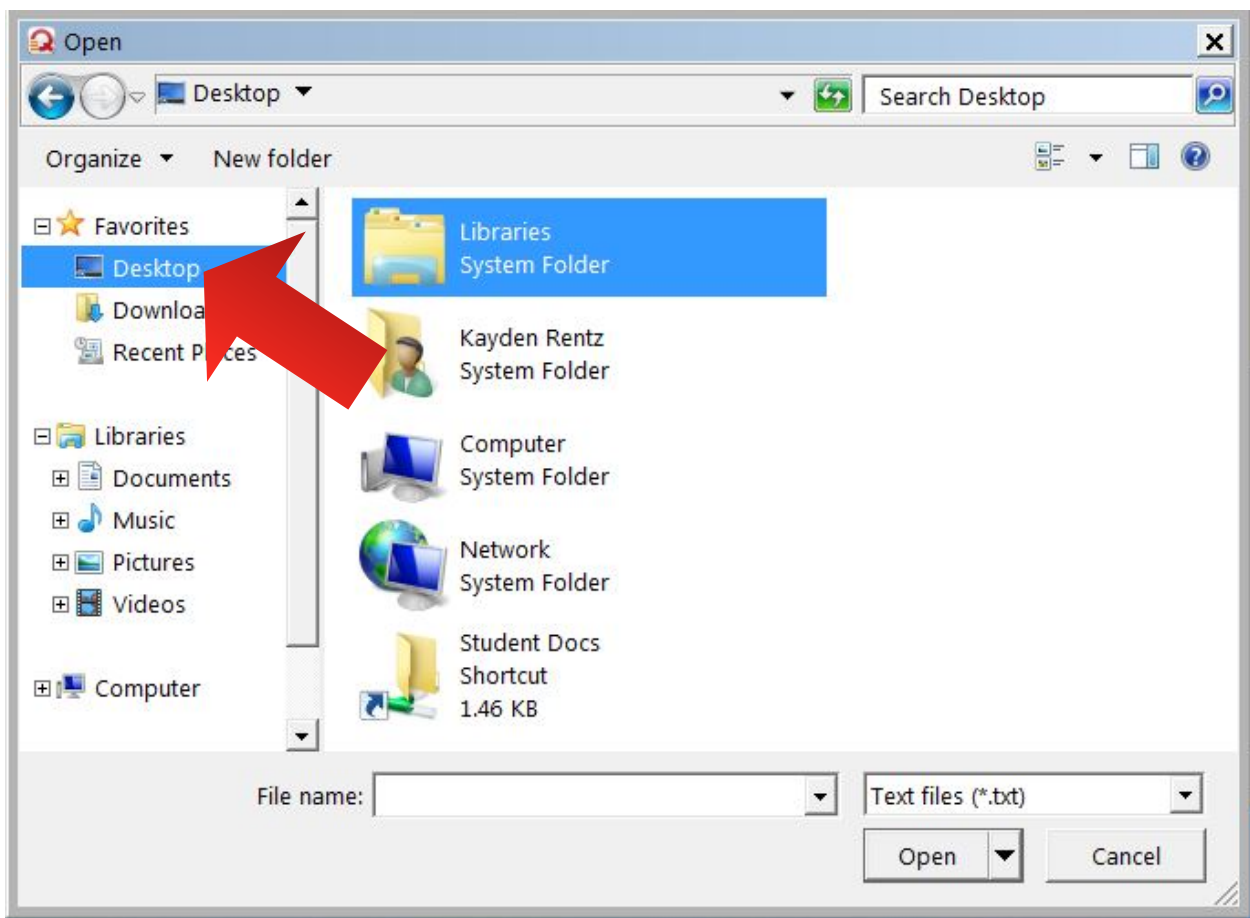
2. Select "Train Speech".



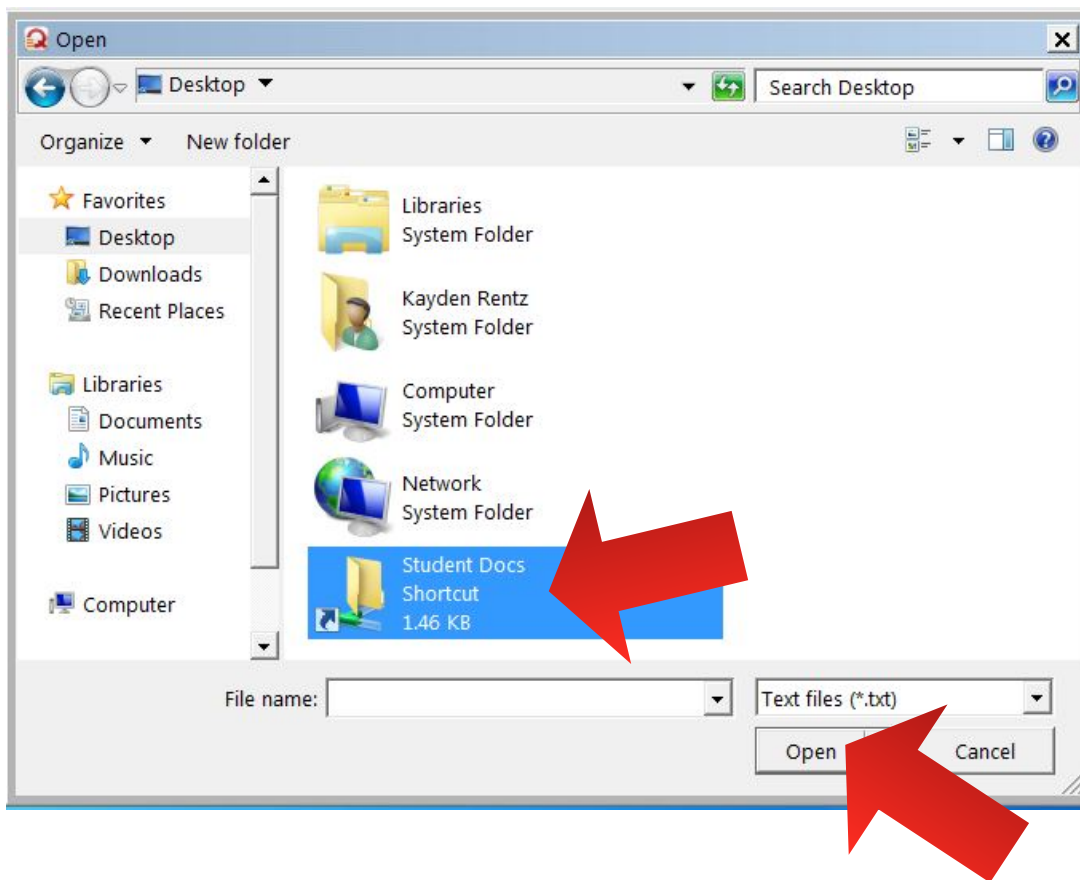
3. Ignore the error message that pops up and click “ok”



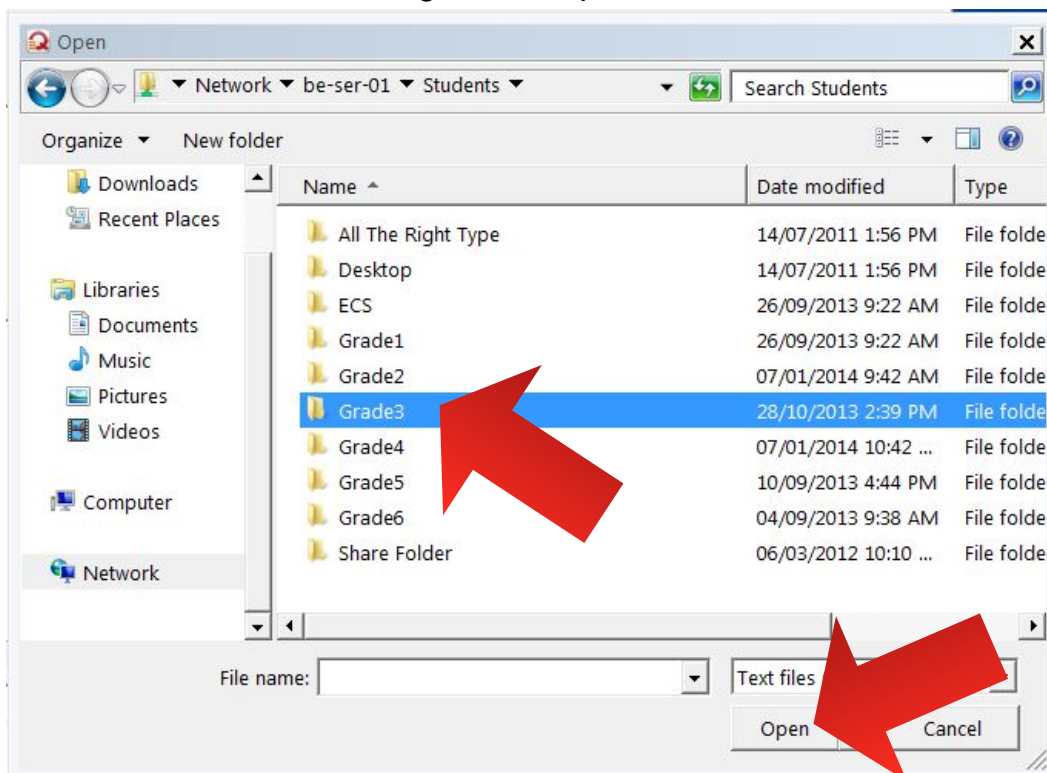
4. Select “Desktop”



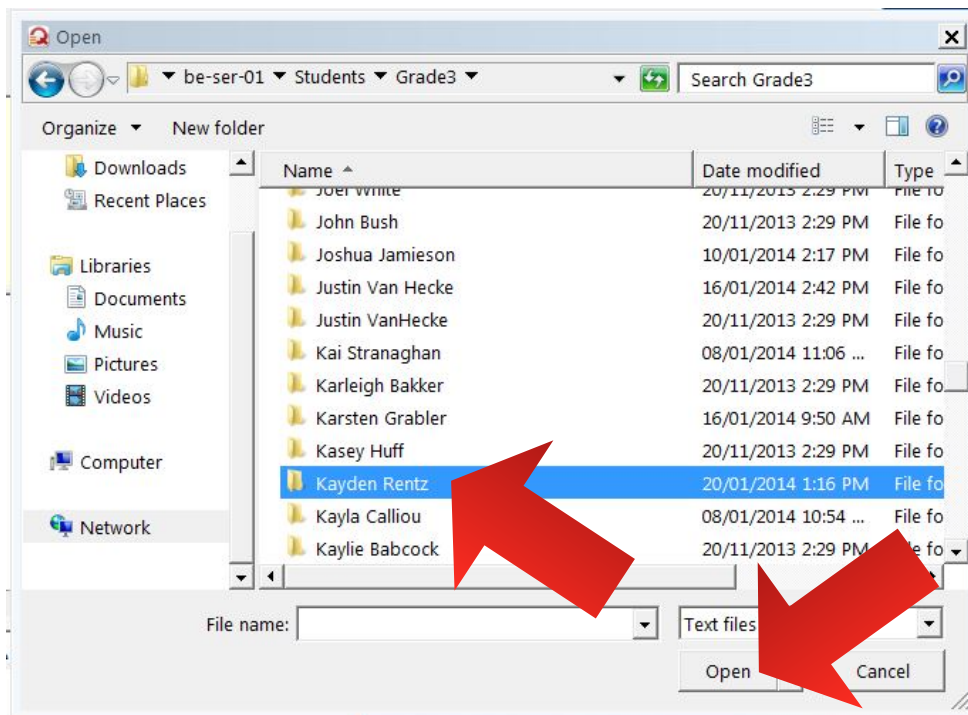
5. Select “Student Docs” & “open”



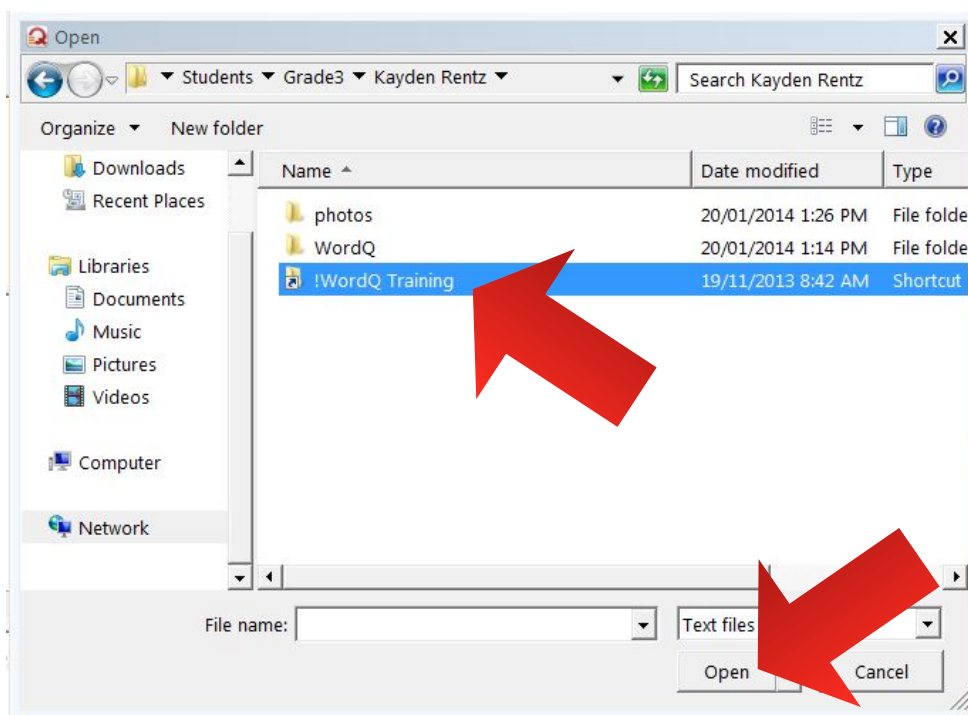
6. Students chooses their grade & “open”



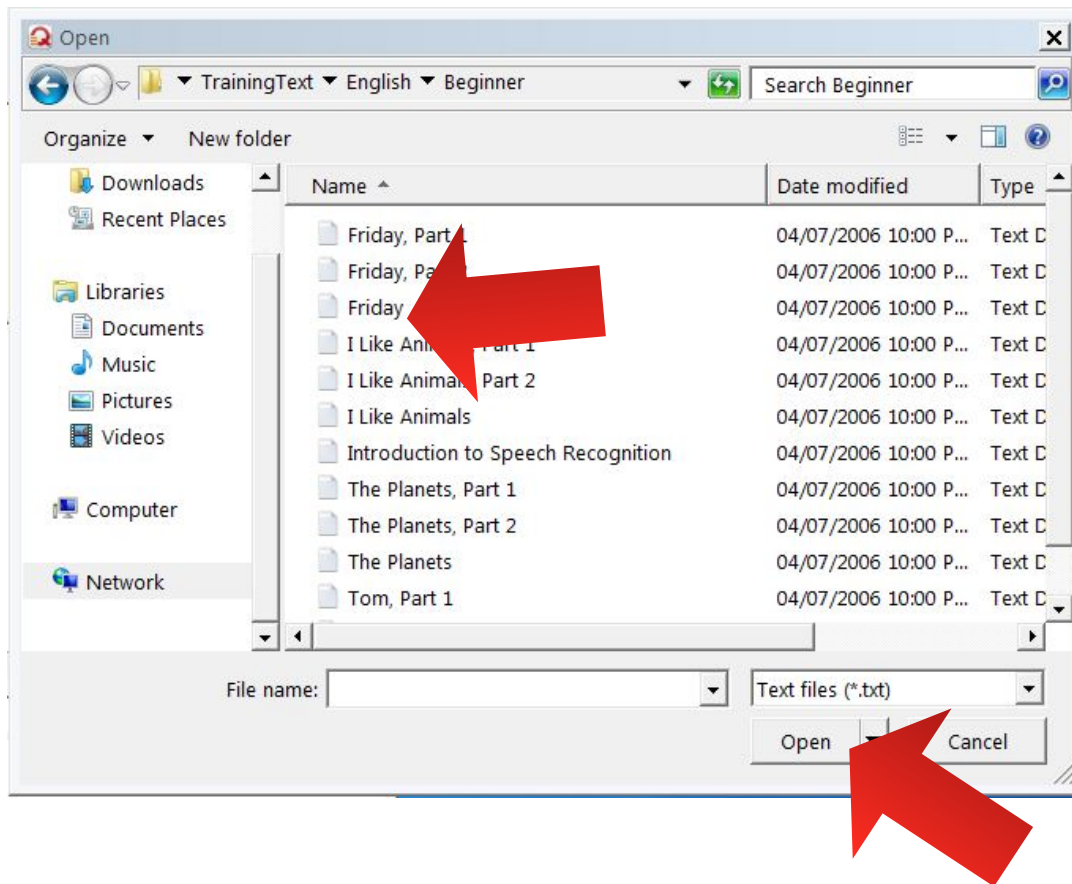
7. Students chooses their name & “open”



8. Chooses the “!WordQ Training” file & “open”



9. Choose one of the files to read & “open”. It does not matter which one.



10. They are now able to train speech.

